

uplifting<sup>^</sup>



COMMERCIAL RANGE

# Upholstery<sup>///</sup> collection

UPHOLSTERY 2025/2026



## Uplifting Upholstery Collection

In our Upholstery Collection, we've carefully curated a range of eco-friendly fabrics sourced from esteemed companies committed to sustainable practices. We believe that luxury shouldn't come at the expense of the planet, which is why we've chosen materials that are kind to the environment and ethically produced.

Our collection offers a plethora of options, ensuring a tailored look for every chair in your space. From task seating to executive and meeting chairs, visitor and training seating, stools to soft seating, and armchairs, our selection promises diversity to suit any environment.

With the freedom to choose your desired fabric or select from our curated list, each piece becomes an expression of your individual style and your commitment to sustainability. Our dedication to offering a wide array of eco-friendly fabrics from different companies ensures that you have access to the latest trends and the highest-quality materials.

Whether you prefer the classic elegance of traditional fabrics or the contemporary flair of modern textiles, our collection caters to all preferences. Discover the perfect blend of comfort, aesthetics, and environmental consciousness with Uplifting's Upholstery Collection. Whether you're furnishing a corporate office, a collaborative workspace, or a cozy lounge area, our customizable chairs embody sophistication and functionality, making them the ideal choice for any setting.



### **SUSTAINABILITY STATEMENT**

At Uplifting, we have implemented best practices to ensure we are leading the way for the furniture industry. We aim to continue to lead the way in both product and service while being conscious of our environmental and social impact. We are dedicated to operating a sustainable and responsible business that reflects our core values and contributes positively to society and the environment. This sustainability policy outlines our commitment to environmental stewardship, social responsibility, and economic sustainability.



### **ENVIRONMENTAL STEWARDSHIP**

- Implementing eco-friendly fabrics sourced from sustainable materials and processes to reduce environmental impact.
- Utilising efficient manufacturing techniques to minimise waste, conserve resources, and reduce landfill contributions.
- Partnering with suppliers who prioritise sustainability, ensuring our upholstered chairs uphold environmental responsibility.



### **SOCIAL RESPONSIBILITY**

- Our workplace culture prioritises the well-being of our employees, providing a safe, inclusive, and supportive environment that fosters growth, diversity, and work-life balance
- We uphold the highest ethical standards across all facets of our operations, committing to transparency, integrity, and respect in every business interaction
- Our manufacturing processes prioritise environmental sustainability, utilising eco-friendly materials and efficient techniques to minimise waste and reduce our carbon footprint



### **ECONOMIC SUSTAINABILITY**

- We source many fabrics from sustainable materials, such as recycled fibres or organic textiles, to reduce environmental impact and promote resource conservation
- Our manufacturing processes for upholstering chairs are designed to minimize energy consumption and emissions, incorporating energy-efficient machinery and optimising production workflows.
- We are committed to reducing our carbon footprint

WARWICK

# KEYLARGO

WARWICK



FROST



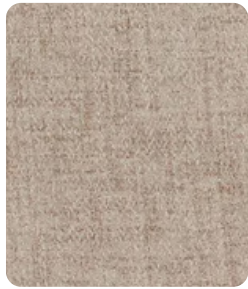
GRAPHITE



GRASS



IVORY



ALMOND



ANTHRACITE



AQUA



LEAD



LINEN



MARIGOLD



MOCHA



ASH



ATLANTIC



BORDEAUX



NAVY



OATMEAL



OCEAN



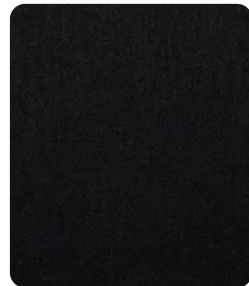
PAPRIKA



CHERRY



DENIM



EBONY



PEBBLE



PISTACHIO



PUMICE



PUMPKIN



SILVER



SKY



SLATE



TEAL



WASABI



WILLOW



ZINC



STORM

**COLLECTION**

Keylargo

**BRAND**

Warwick

**PRODUCT TYPE**

Upholstery  
(Heavy Commercial)

**COMPOSITION**

100% Polyester

**MARTINDALE**

160,000 Cycles

**WITH (CM)**

149

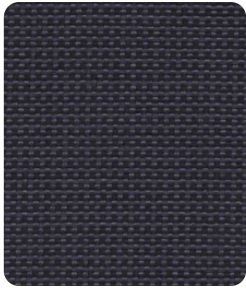
**WEIGHT (GSM)**

349

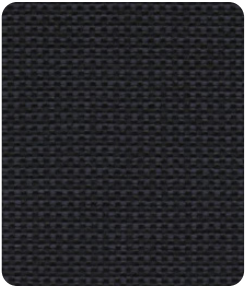


INSTYLE

# THINK PLUS



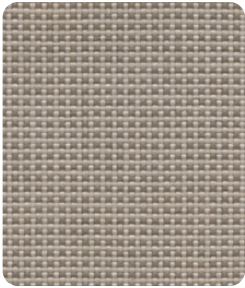
CHOICE



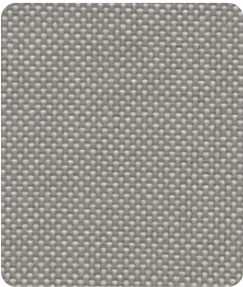
OF ME



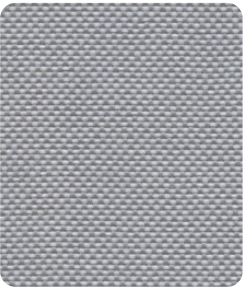
NIGHT TIME



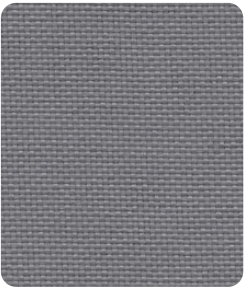
YOUNG



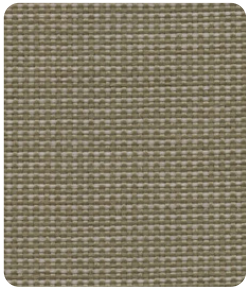
QUIET



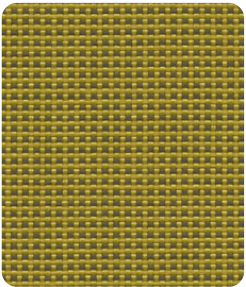
PACE



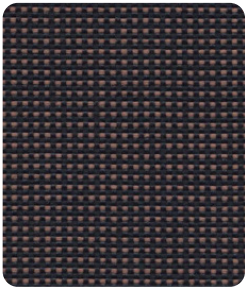
FOCUS



MINDULLY



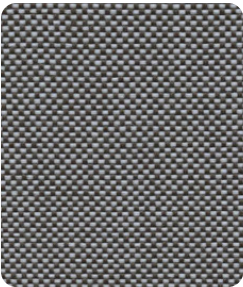
EXCLUSIVELY



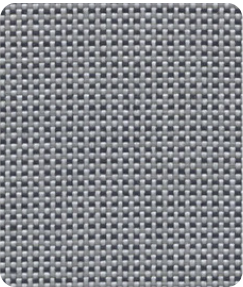
ECLECTIC



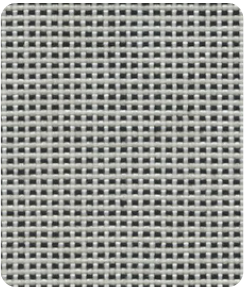
TANK



ABILITY



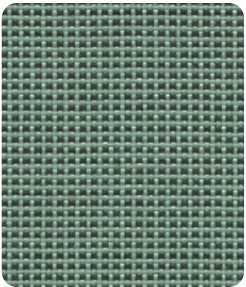
INSTINCTIVELY



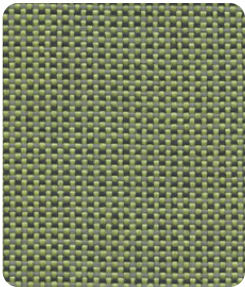
LOGICALLY



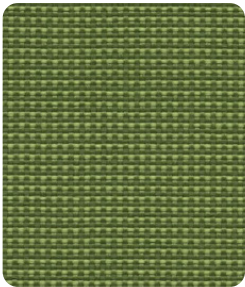
MODERN



RETRO



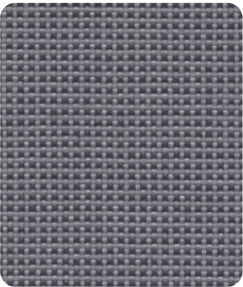
DAYDREAM



HAPPY



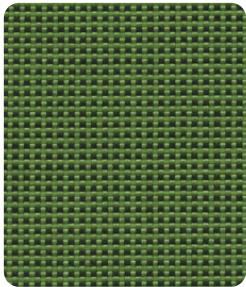
VERVE



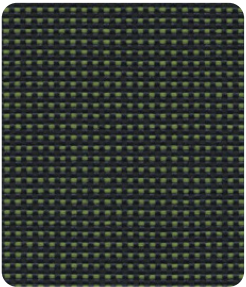
TWICE



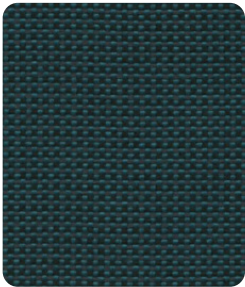
TACTICS



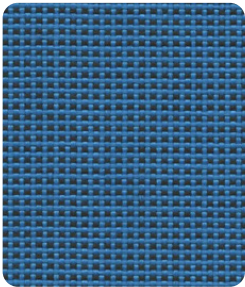
NEXT



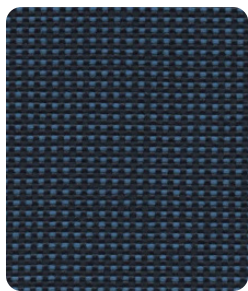
KARMA



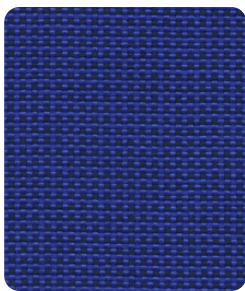
TOGUETHER



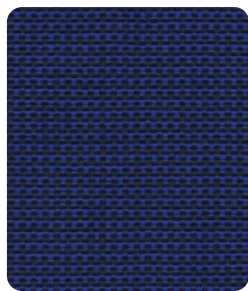
FRESH



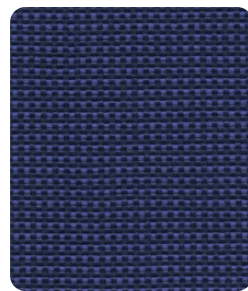
EFFECTIELEY



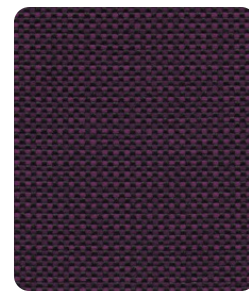
ALAUD



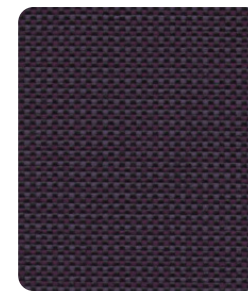
VERSATILE



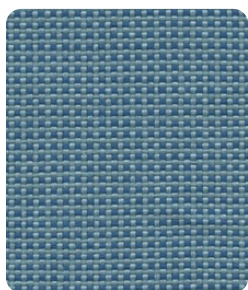
LATERALLY



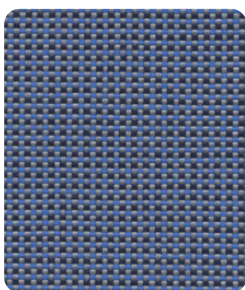
BRAVELY



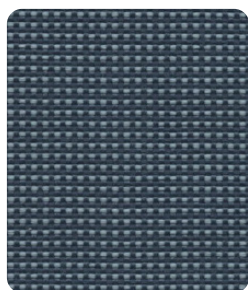
SMART



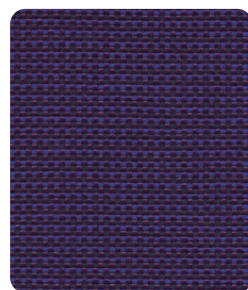
HOLISTICALLY



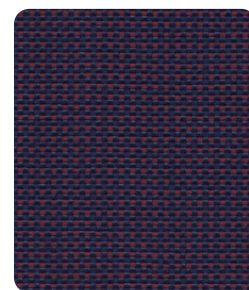
WHISH



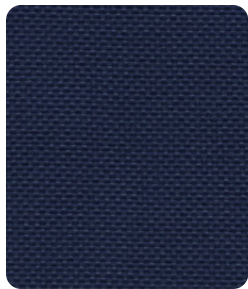
LEGACY



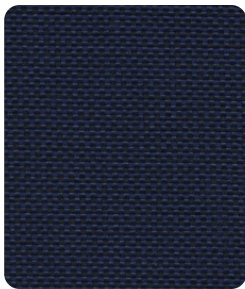
ADVANTAGE



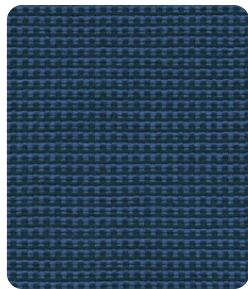
DEEPLY



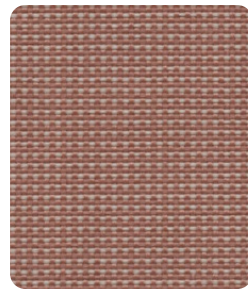
SERIOUSLY



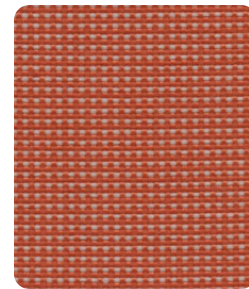
PRACTICAL



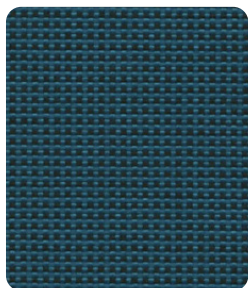
ABOUT IT



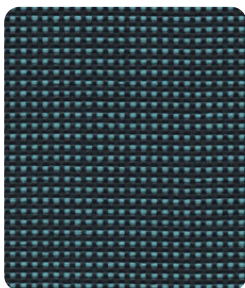
PEACEFULLY



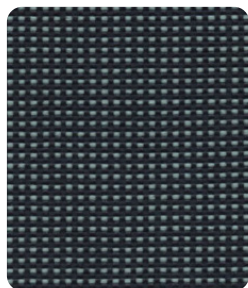
TREND



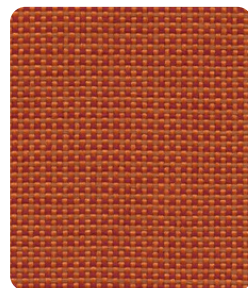
VISUALLY



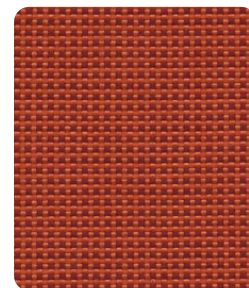
BLUE SKY



URBAN



BUBBLE



ONE

**COLLECTION**

Think Plus

**BRAND**

Instyle

**PRODUCT TYPE**

Upholstery  
(Heavy Commercial)

**COMPOSITION**

100% Polyester

**MARTINDALE**

770,000 Cycles

**WITH (CM)**

137

**WEIGHT (GSM)**

305

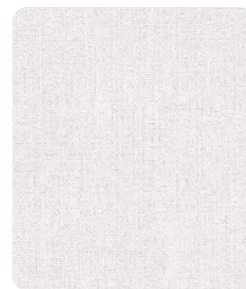
WORTLEY

# DRIFT

WORTLEY



NUTMEG



PINKSALT



POWDER BLUE



AEGEAN



ALMOND



ALPINE



SKY



SMOKE



STONE



CORNFLOUR



DENIM



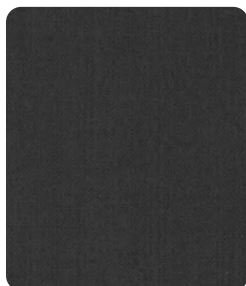
FROST



WILLOW



ZINC



GRAPHITE



LILAC



LILEN



SEAFOAM



WHEAT

## COLLECTION

Drift

## BRAND

Wortley

## PRODUCT TYPE

Upholstery  
(Heavy  
Commercial)

## COMPOSITION

100% Polyester

## MARTINDALE

50,000 Cycles

## WITH (CM)

142



WORTLEY

# BELGRAVE

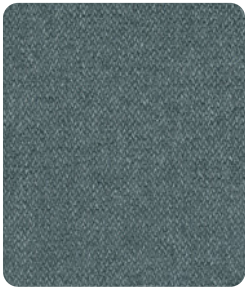
WORTLEY



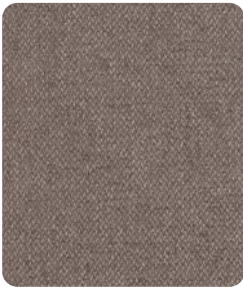
PEARL



RAVEN



AEGEAN



BEAVER



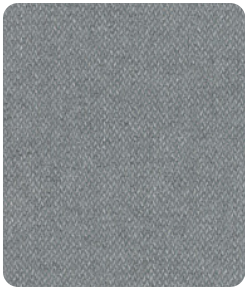
BLUSH



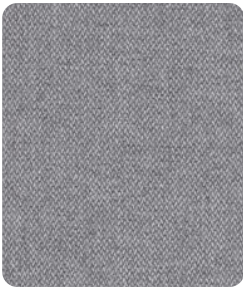
SILVER



TEAL



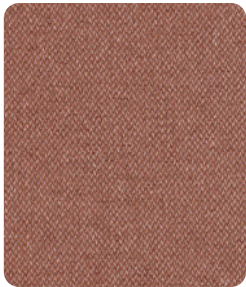
CLOUD



DOVE



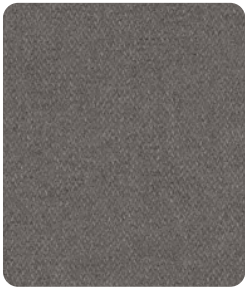
JADE



RESEWOOD



RUSSET



NICKEL



OATMEAL



OCEAN

**COLLECTION**

Belgrave

**BRAND**

Wortley

**PRODUCT TYPE**

Upholstery  
(Heavy Commercial)

**COMPOSITION**

100% Polyester

**MARTINDALE**

100,000 Cycles

**WITH (CM)**

144

**WEIGHT (GSM)**

326

WORTLEY

# CONRAD

WORTLEY



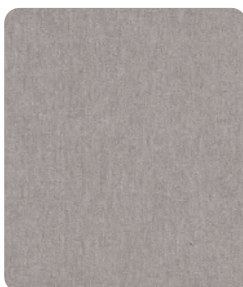
PLATINUM



PARCHMENT



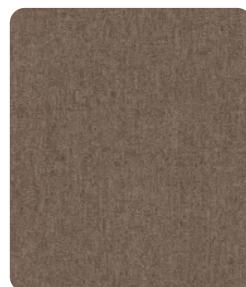
CAPRI



DOVE



EARTH



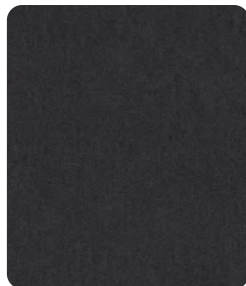
SISAL



FEATHER



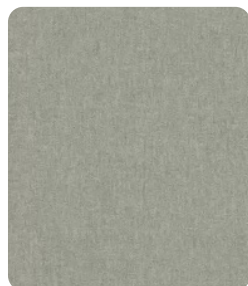
FLAX



GRAPHITE



SIENNA



HAZE



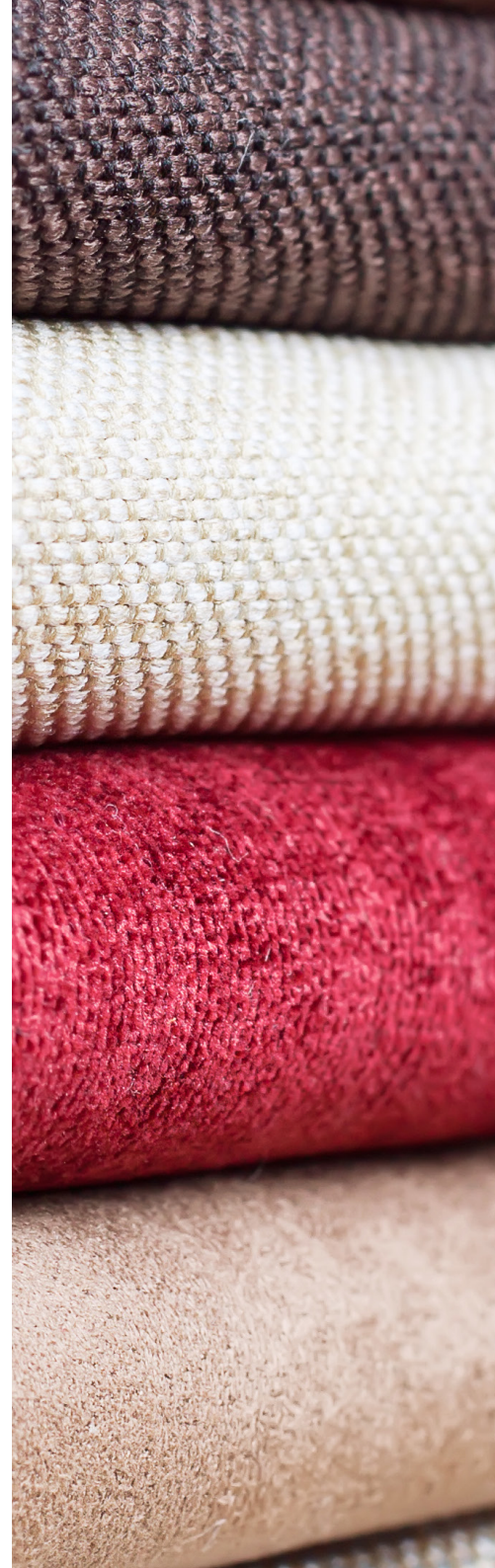
INDIGO



MUSK



SEAGRASS



## COLLECTION

Conrad

## BRAND

Wortley

## PRODUCT TYPE

Upholstery  
(Heavy Commercial)

## COMPOSITION

100% Polyester

## MARTINDALE

100,000 Cycles

## WITH (CM)

142

## WEIGHT (GSM)

303

WORTLEY

# ELTON

WORTLEY



GRAOHITE



HONEYCOMB



IVY



AGAVE



ARMY



ATLANTIC



LAKE



MERLOT



MIDNIGHT



BARK



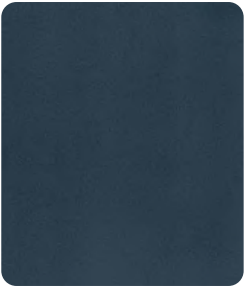
CARBON



CLOVE



MUSK



NAVY



JARRAH



PEACH



DATE



EUCALYPTUS



RESEWOOD



REGAL



SHELL

**COLLECTION**  
Elton

**BRAND**  
Wortley

**PRODUCT TYPE**  
Upholstery  
(Heavy  
Commercial)

**COMPOSITION**  
100% Polyester

**MARTINDALE**  
70,000 Cycles

**WITH (CM)**  
140

**WEIGHT (GSM)**  
275

AT WORK\* WITH CAMIRA

# MOMENTUN

at work\* with Camira



IMPACT



IMPULSE



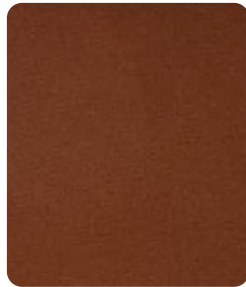
POWER



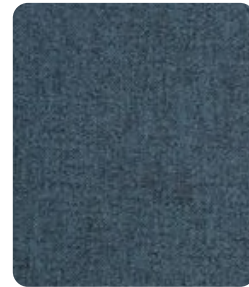
VIVID



SMOKED



HEAT



SPEED



STRENGTH



ACTION



ENCHANTED



CAYENNE



DASH



MOTIVE



PERPETUAL



DRIVE



ENERGY



FORCE



VIGOUR



TENSION

**COLLECTION**  
Momentun

**BRAND**  
At work\* with  
Camira

**PRODUCT TYPE**  
Upholstery  
(Heavy  
Commercial)

**COMPOSITION**  
100% Polyester

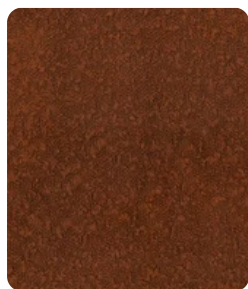
**MARTINDALE**  
100,000 Cycles

**WITH (CM)**  
142

WARWICK

# OVIS

WARWICK



UMBER



ECRU



IVORY



MIDNIGHT



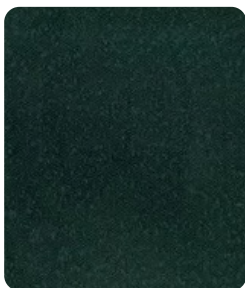
NOUGAT



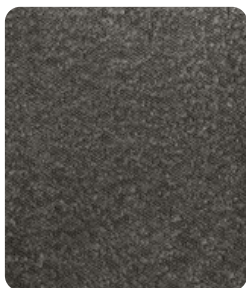
ONYX



PUMICE



SPRUCE



STEEL

## COLLECTION

Ovis

## BRAND

Warwick

## PRODUCT TYPE

Upholstery  
(Heavy  
Commercial)

## COMPOSITION

80% Polyester  
10% Acrylic  
10% Cotton

## MARTINDALE

80,000 Cycles

## WITH (CM)

142

## WEIGHT (GSM)

630





WORTLEY

# PARINGA

WORTLEY



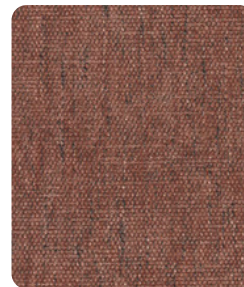
COTTON



SILVERCLOUD



GRANITE



SPICE



HUSK



LAGOON



NEPTUNE



OTMEAL



PINE

## COLLECTION

Paringa

## BRAND

Wortley

## PRODUCT TYPE

Upholstery  
(Heavy  
Commercial)

## COMPOSITION

100% Polyester

## MARTINDALE

50,000 Cycles

## WITH (CM)

143

INSTYLE

# MEZZO



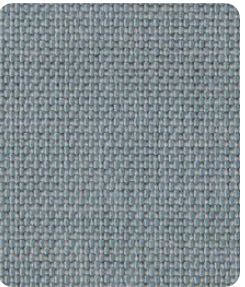
THEATER



AQUATINT



DRAMA



YOUNGROUPE



OYSTER



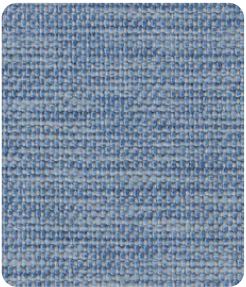
ROMANCE



PAPAYA



SCI-FI



ETHOS



BLUES



ELECTRONIC



POETRY



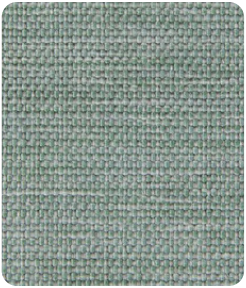
WESTERN



HAZELWOOD



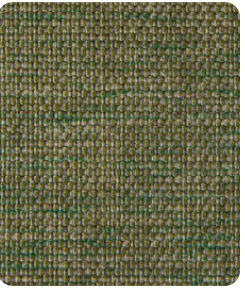
LIST



NEW WAVE



JAZZ



COMEDY



WHISPER



FICTION



QUICKSILVER



TERRAGON



VIRIDIAN



OPERA



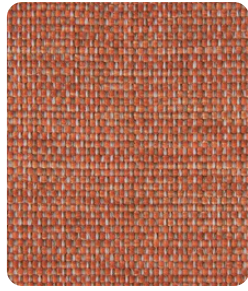
SWING



LATIN



INCA



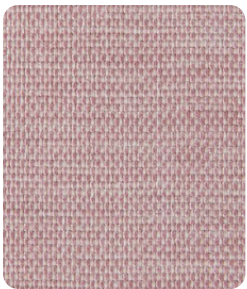
MASALA



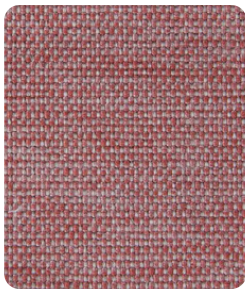
MYSTERY



FOLK



SONNET



DELPHINE



BROADWAY



GARNET

**COLLECTION**

Mezzo

**BRAND**

Instyle

**PRODUCT TYPE**

Upholstery  
(Heavy Commercial)

**COMPOSITION**

100% Olefin

**MARTINDALE**

450,000 Cycles

**WITH (CM)**

137



WARWICK

# OZARK

WARWICK



ACACIA



ALOE



COCOA



PEPPER



PETAL



PEWTER



CORAL



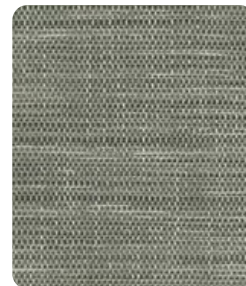
ECRU



INK



SPICE



STEEL



OYSTER



IVY



JADE



LAGOON



TAHINI



SCARLET



MOCHA



ULBERRY



MUSTARD

## COLLECTION

Ozark

## BRAND

Warwick

## PRODUCT TYPE

Upholstery  
(Heavy  
Commercial)

## COMPOSITION

61% Acrylic  
39% Polyester

## MARTINDALE

100,000 Cycles

## WITH (CM)

140

## WEIGHT (GSM)

575

WORTLEY

# TESSUTO

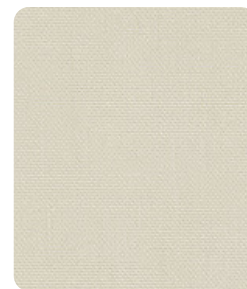
WORTLEY



CREMA



PESTO



GESSO



AQUA



ARENA



ASINO



SALSA



LIDO



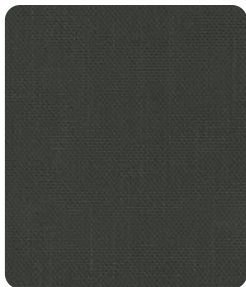
MANDARIN



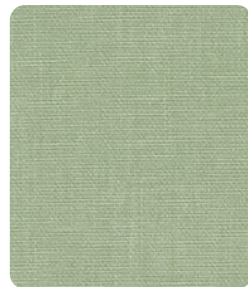
BLU



CAPPUCINO



CARBONE



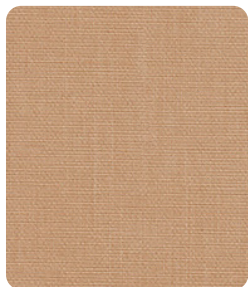
MENTA



MONTANA



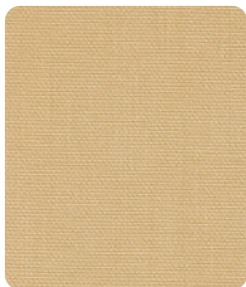
OLIVE



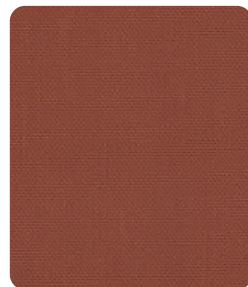
CASTANO



CHIELO



SOLE



RUSTICA



SABBIA



MARINA

## COLLECTION

Tessuto

## BRAND

Wortley

## PRODUCT TYPE

Upholstery  
(Heavy  
Commercial)

## COMPOSITION

85% PVC  
15% Polyester

## MARTINDALE

50,000 Cycles

## WITH (CM)

137

## WEIGHT (GSM)

620

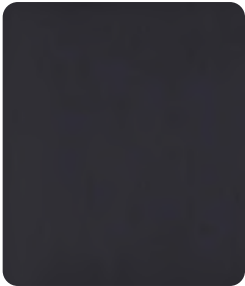
WARWICK

# LUSTRELL CHARISMA

WARWICK



CANVAS



COBALT



CORAL



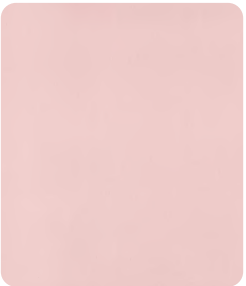
SAGE



ARMY



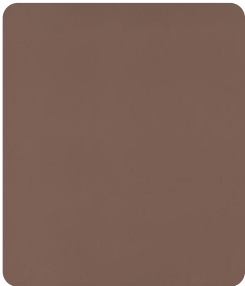
SPROUT



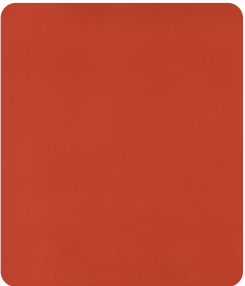
BALLET



EARTH



TAUPE



SALSA



BLACK



SADDLE



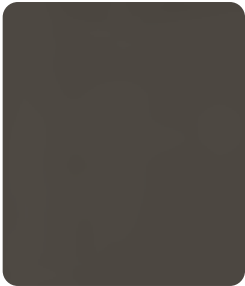
BREEZE



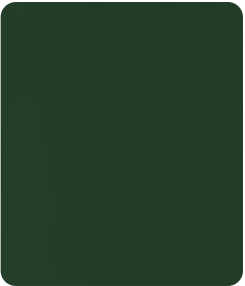
ETHER



GLACIER



GUNMETAL



IVY



BRICK



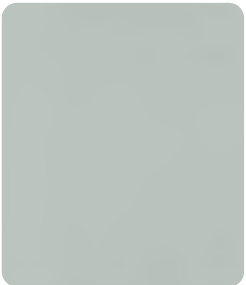
BUFF



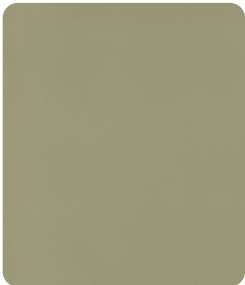
CAMEL



JUNGLE



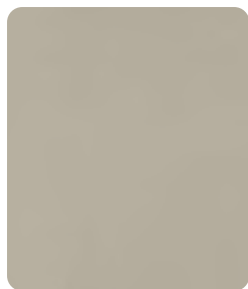
MINERAL



TUSSOCK



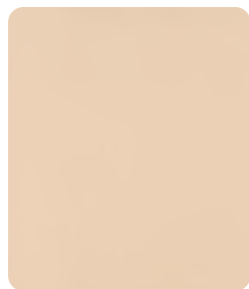
MUSTARD



NATURAL



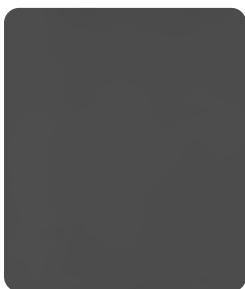
NICKEL



PARCHMENT



NOUGAT



SLATE



POPPY



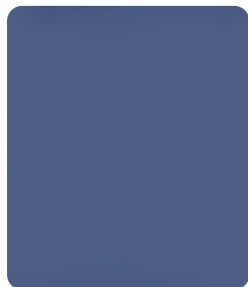
STONE



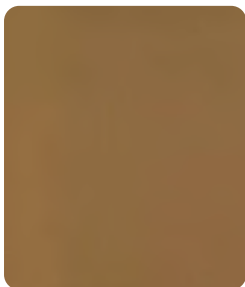
OYSTER



RAIN



PACIFIC



TAN



TRAL

#### **COLLECTION**

Lustrel  
Charisma

#### **BRAND**

Warwick

#### **PRODUCT TYPE**

Upholstery  
(Heavy  
Commercial)

#### **COMPOSITION**

82% PVC  
18% Polyester

#### **MARTINDALE**

150,000 Cycles

#### **WITH (CM)**

137

#### **WEIGHT (GSM)**

671



WARWICK

# EASTWOOD

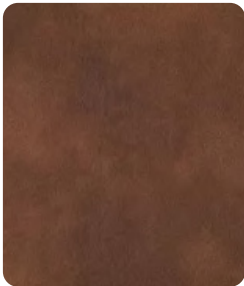
WARWICK



PUMICE



SAND



BISON



BORDEAUX



BRUNSWICK



CHOCOLATE



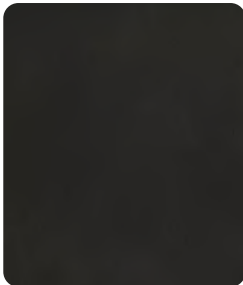
DONKEY



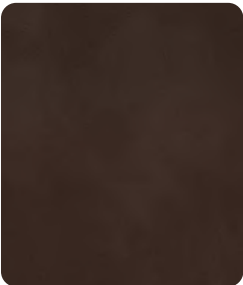
DOVE



SLATE



EBONY



JAVA



TAN



TAUPE



TAN

**COLLECTION**  
Eastwood

**BRAND**  
Warwick

**PRODUCT TYPE**  
Upholstery  
(Heavy  
Commercial)

**COMPOSITION**  
100% Polyester

**MARTINDALE**  
56,000 Cycles

**WITH (CM)**  
140

**WEIGHT (GSM)**  
400



# Care & Maintenance.

## GENERAL CARE - AVOID THE FOLLOWING CONDITIONS

- Prolonged exposure to direct sunlight
- Any heat source (ie. radiator or heater)
- Sharp objects (buckles, jewellery, keys, pet claws etc)
- Common cleaning materials, paints, solvents, nail varnish, dyes and felt pens

## GENERAL CARE - INSTRUCTIONS

- Rotate cushions regularly
- Vacuum furniture regularly with the appropriate attachment Do not scrub with a stiff brush
- Allow thorough drying before re-use
- Remove any excess spills from the furniture surface

## PROFESSIONAL FABRIC SERVICING

Fabric protectors do not eliminate the need for vacuuming, routine cleaning or proper care. They will, however, make spot cleaning and vacuuming quicker, easier and more efficient between professional cleans and keep your fabric looking cleaner longer, as well as extending its life. Professionals applying fabric protectors must always pre-test to qualify for fabric suitability.

## GENERAL CARE - SPOT CLEANING

Treat spills and stains as soon as possible. Test on hidden areas to ensure fabric and colour are not removed. Gently scrape any soil or mop any liquid from the surface of the fabric. Use of soap or detergent with water should be approached with caution since overzealous rinsing to remove soap residue may result in over-wetting, water marking and possible wetting of the substructure (this may create other stains or damage products)

- For non-oil-based stains Use warm water and non-toilet soaps which do not contain optical brighteners (consider Velvet soap, Lux Flakes, Softly). Mix a small amount of soap and warm water solution and apply to the stain, rubbing gently. Blot dry with a clean towel. Apply cool water (preferably filtered or distilled water) and blot dry again. Then with a hair dryer, working out from the centre of the stain, dry quickly to prevent rings forming. It is generally preferable to clean whole panels of fabric in this way rather than trying to spot clean specific areas.
- For oil-based stains following the same basic guidelines as above, apply a proprietary brand solvent-based cleaner and try to clean generally in panels rather than spot-cleaning specific areas. A helpful industry 'secret' for spot removal of oil-based biro marks is the application of conventional hair spray

# Stain Removal.

## WATER SPOTS

Blot thoroughly and then dampen the entire spot with clear white vinegar. Wait a few minutes. When the area is dry, moisten it again with clear water, blotting with a dry cloth after every application of the damp cloth. If the fabric has a pile, brush in the direction of the pile when dry.

## INK

Moisten with warm glycerine. Leave for 10 minutes. Apply liquid detergent and brush lightly. Flush out with water and dry quickly.

## CHEWING GUM

Rub an ice cube over the gum to harden it, then scrape off the excess with a dull knife. To remove what's left, use dry cleaning fluid.

## COSMETICS, SOFT DRINKS, COFFEE AND TEA

Sponge with warm water. Apply warm glycerine. Leave for 30 minutes. Flush out with water and dry quickly

## GREASE AND OIL

Scrape away excess and dab repeatedly with dry cleaning fluid. If a stain remains, go over the area with a lukewarm mixture of liquid detergent and water. Make sure you use a clean portion so you don't put the stain back in. Go over the area with a clean cloth moistened with cool water.

## FRUIT AND FRUIT JUICES

After excess is blotted up or scraped, blot the spot with cool water. If a stain remains, add liquid detergent and a drop of vinegar to the water. Dab the spot with this mixture and blot until there's no trace of a stain. Go over the area lightly with clear water to remove traces of vinegar.

## ALCOHOLIC BEVERAGES

After the moisture has been blotted up, dab at the stain with a clean cloth dampened in rubbing alcohol. Then blot repeatedly with liquid detergent mixed with cool water. Blot dry with a towel. Dab again with clear cool water and blot dry.

## IODINE

Rub with cut lemon before sponging with warm water. Apply a small quantity of detergent with a clean cloth. Blot the stain then remove the soapy residue with a cloth wrung out in warm water and white vinegar solution (1/3 vinegar to 2/3 water).

## BLOOD

Mix one teaspoon of ammonia in a cup of cold water and apply it sparingly to the spot. Blot with a clean towel. Repeat until the spot is gone. Dab the area with cool water and blot. Wait 15 minutes and moisten the area again with white distilled vinegar. Blot thoroughly with a dry towel.

uplifting